

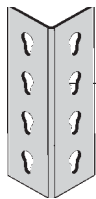
Rivet Rack Storage Systems



Rivet rack is a safe and effective way to meet a broad range of storage requirements with one economical system. Rugged 14 ga. components require no special clips, fasteners, or tools – simply snap together to lock in place. Strong, sturdy steel units allow stored material to be accessed from all sides. Available as shelving, bulk storage, records storage sections, and tire storage units. Particle board or wire decking optional. Additional shelves available separately.

Component Parts

(A) Angle Posts



1½" w x 1½" d uprights, punched on 1½" centers for shelf adjustments.

Cat. No.	Size	Cat. No.	Size
97-1003	3'h	97-1007	7'h
97-1004	4'h	97-1008	8'h
97-1005	5'h	97-1009	9'h
97-1006	6'h	97-1010	10'h
		97-1212	12'h

(B) T-Posts

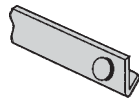


3" w x 1½" d common uprights for continuous run installations.

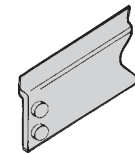
Cat. No.	Size	Cat. No.	Size
97-1105	5'h	97-1108	8'h
97-1106	6'h	97-1110	10'h
97-1107	7'h	97-1112	12'h

(C) Single Rivet Beams

Light duty shelf supports, 1" high. For intermediate levels only.



Cat. No.	Size	Cat. No.	Size
97-2012	12"w	97-2030	30"w
97-2015	15"w	97-2036	36"w
97-2016	16"w	97-2042	42"w
97-2018	18"w	97-2048	48"w
97-2024	24"w		



(D) Double Rivet Flanged Beams

Standard capacity shelf supports, 2¾" high. Provides structural integrity at top and bottom of units.

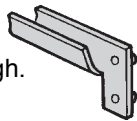
Cat. No.	Size	Cat. No.	Size
97-1012	12"w	97-1042	42"w
97-1015	15"w	97-1048	48"w
97-1016	16"w	97-1060	60"w
97-1018	18"w	97-1069*	69"w
97-1024	24"w	97-1069R*	69"w
97-1030	30"w	97-1072*	72"w
97-1032	32"w	97-1084*	84"w
97-1036	36"w	97-1096*	96"w

*Center supports (H) required

R=Punched for Box Support Rails (M)

(E) Low Profile Double Rivet Beams

Light Duty shelf supports, 1" high. Provides structural integrity and maximum clearance.

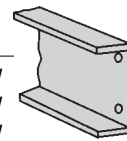


Cat. No.	Size	Cat. No.	Size
97-2115	15"w	97-2136	36"w
97-2118	18"w	97-2142	42"w
97-2124	24"w	97-2148	48"w
97-2130	30"w		

(F) Double Rivet Channel Beams

Heavy-duty shelf support, 2¾" high.

Cat. No.	Size	Cat. No.	Size
97-2248	48"w	97-2272	72"w
97-2260	60"w	97-2284	84"w
97-2269	69"w	97-2296	96"w

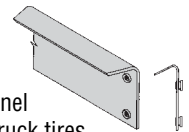


(G) Double Rivet Tire Beams

Side-to-side support, 60" wide, 2¾" high with top flange at 30° angle to cradle tires.

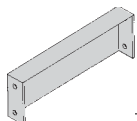
No. 97-2360—flanged beam for passenger & light truck tires

No. 97-2460—channel beam for heavier truck tires



(H) Center Support

Front-to-back, 2½" high decking support and beam stabilizer.

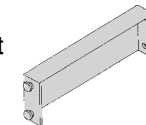


Cat. No.	Size	Cat. No.	Size
97-3012	12"w	97-3030	30"w
97-3015	15"w	97-3032	32"w
97-3016	16"w	97-3036	36"w
97-3018	18"w	97-3042	42"w
97-3024	24"w	97-3048	48"w

(J) Wall Tie

Space and anchor rivet rack to wall, 2½" high.

No. 97-3109—9" length



Vinyl End Caps (not pictured)

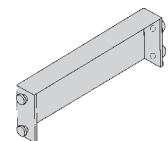
Cover ends of angle posts. In Frost Gray Color

No. 97-5000

(K) Double Row Tie

Space and secure racks back-to-back, 2½" high.

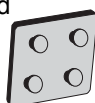
No. 97-3218—18" length



(L) Tie Plate

Connects angle posts in side by side racks. (Not required for T-posts)

No. 97-1000

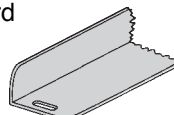


(M) Box Support Rails

Front-to-back supports, 1½" x 1½", angled to hold record storage boxes.

No. 97-0016—16" deep

No. 97-0032—32" deep



(P) Hanger Bar

Slot in bar fits between opposite double rivet beams for hanging clothing and other items.

No. 97-4036—36"

No. 97-4042—42"

No. 97-4048—48"

No. 97-4060—60"

